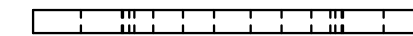
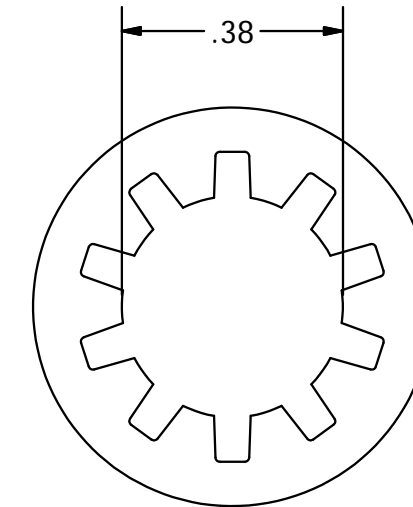


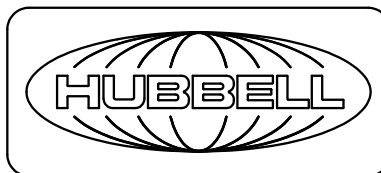
CATALOG NUMBER	DESCRIPTION
HGB25PPW	KIT, 3/8" INTERNAL TOOTH LOCK WASHER KIT

NOTES:

1. WASHER MATERIAL: STAINLESS STEEL
WASHER SURFACE FINISH: GREEN ZINC PLATED
2. KIT SHOULD CONTAIN:
(50) WASHERS
(1) TUBE OF PENETROX
3. SPECIFICATION SUBJECT TO CHANGE WITHOUT NOTICE.



1	18075	01/28/13	INITIAL RELEASE	MMA	
REV.	ECN	DATE	DESCRIPTION	CHG BY	APPD BY

Created on INVENTOR	DIMENSIONING AND TOLERANCE PER ANSI Y14.5M-1982 UNLESS OTHERWISE SPECIFIED, DIMENSIONS ARE IN INCHES (MM). TOLERANCES.XX = ±.01 (.25) .XXX = ±.005 (.127) .XXXX = ±.0025 (.0635) ANGLE TOL ±1°		PROJECT REFERENCE: 2011-041		 Hubbell Premise Wiring HUBBELL INCORPORATED (Delaware) 14 Lord's Hill Road, Stonington, Connecticut 06378	
	IN ACCEPTING OUR DRAWINGS, BLUEPRINTS, OR SUPPORTING DOCUMENTATION FOR QUOTATION OR OTHER PURPOSES, YOU AGREE NOT TO DISCLOSE TO OTHERS THE IDEAS, INFORMATION, OR DESIGNS SHOWN HEREIN, AND THAT YOU WILL MAKE NO USE OF SAME WITHOUT PERMISSION		MATERIAL:			
			DRAWN BY: MABBY 01/28/13		TITLE: GROUNDING WASHER KIT	
			CHECKED BY:		SIZE DRAWING NO. B HWS14210C	
		APPROVED BY:		SCALE: N/A SHEET 1 OF 1		
				REV. 1		